



# PITFALLS *of* PIPELINES

# WHAT COULD POSSIBLY GO WRONG? LOTS!!! SUCH AS...

## Explosions along pipelines

such as the breached gasline in Greeley in 2013



## Compressor station explosions

such as happened in Durango in June of 2012  
that killed one and injured two others

# Excavation damages

such as the Williams pipeline explosion in Weld County when a 12-inch high pressure pipeline was damaged during excavation

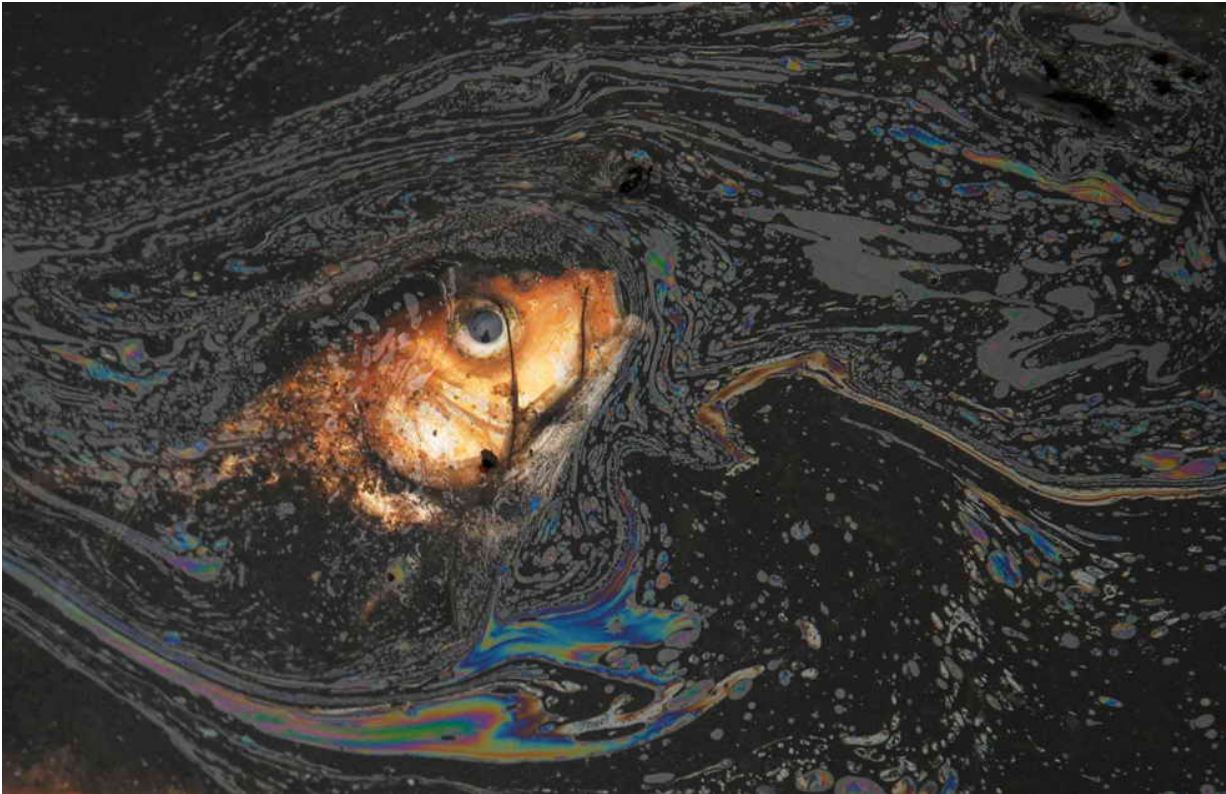


# Corrosion

such as the rupture and fire in Kaycee, Wyoming in 1985

# Equipment failures

such as the explosion of a cast iron pipeline  
that had been installed in 1928



# Natural forces

such as Hurricane Sandy in 2012  
that resulted in 1,600 leaks



# Welding failures

such as the hundreds of pipeline analysis cases studied by  
Dr Grantham in Fredrick, Colorado

# Incorrect operation of equipment

such as when the EPA accidentally released  
mine waste into the Animas River in 2015

